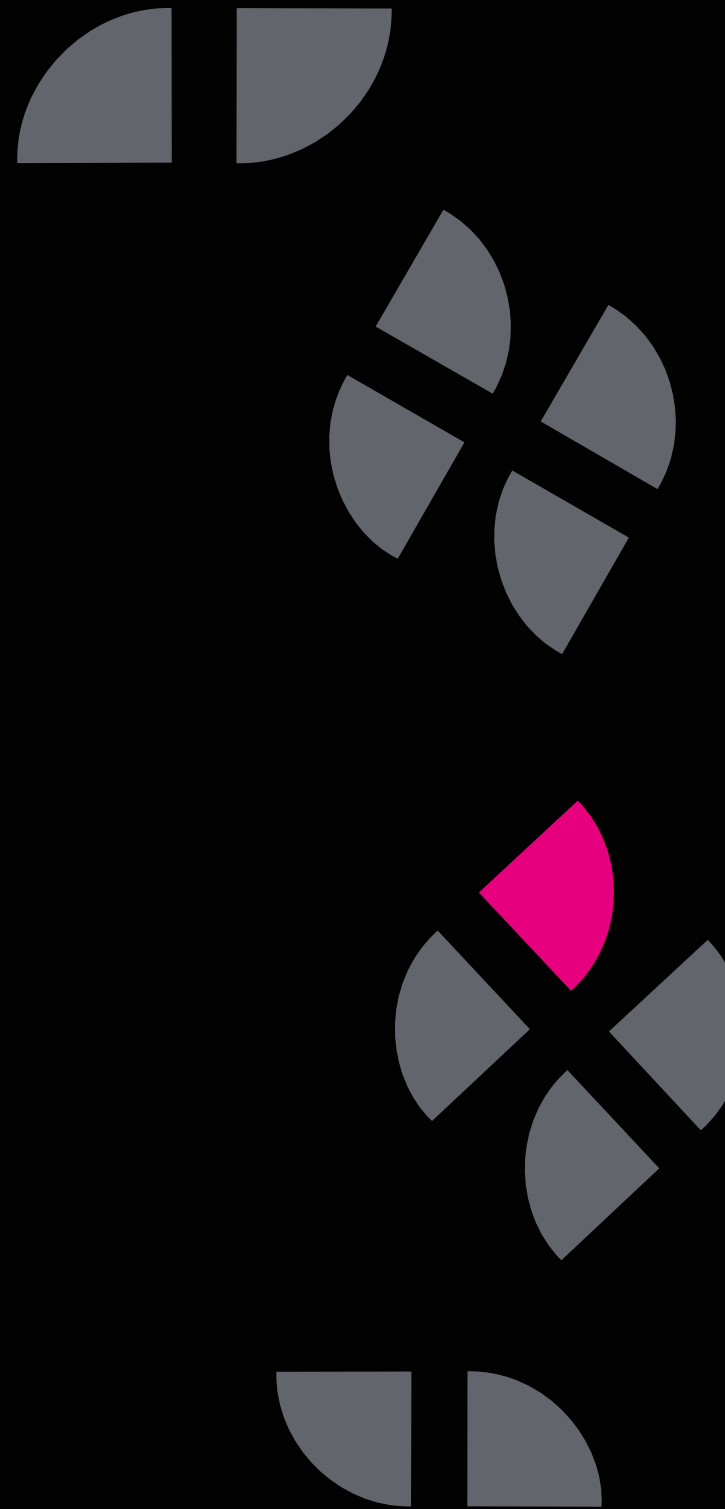




Probe Reports



A guide to understanding Probe Reports

Probe reports tell you how many times sensors have gone above and below their safe thresholds, i.e. if they have triggered an alarm and the duration of these instances. This guide will teach you how to view Probe Reports in Real-Time Online and how to filter reports to only display the information you need.

Step 1

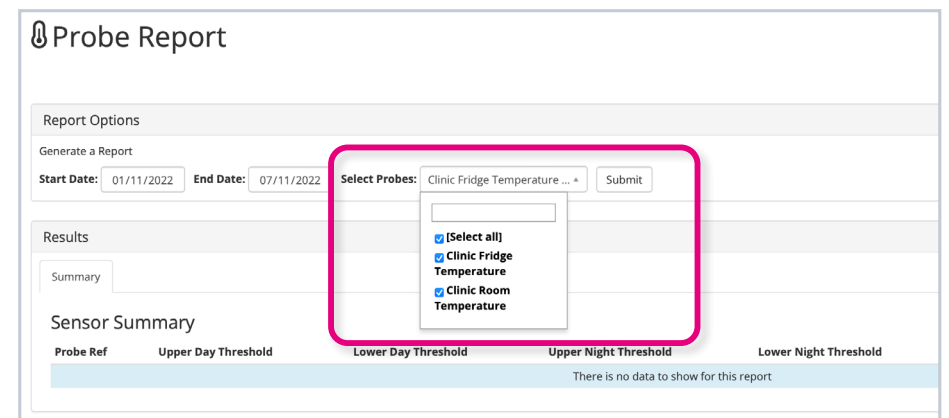
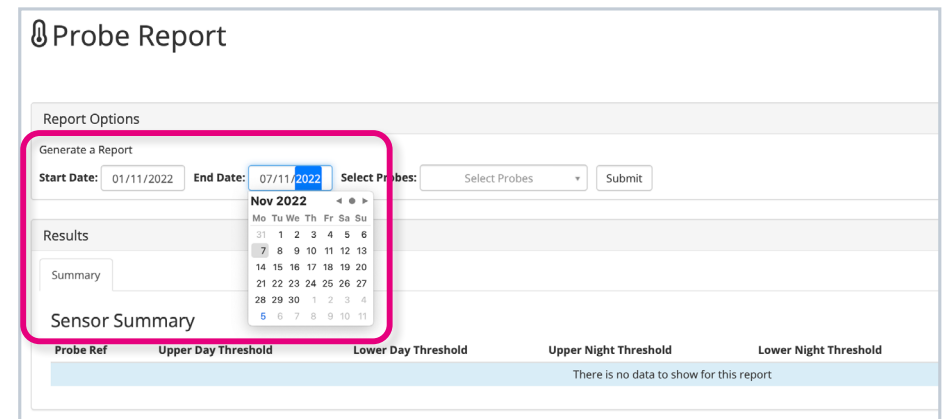
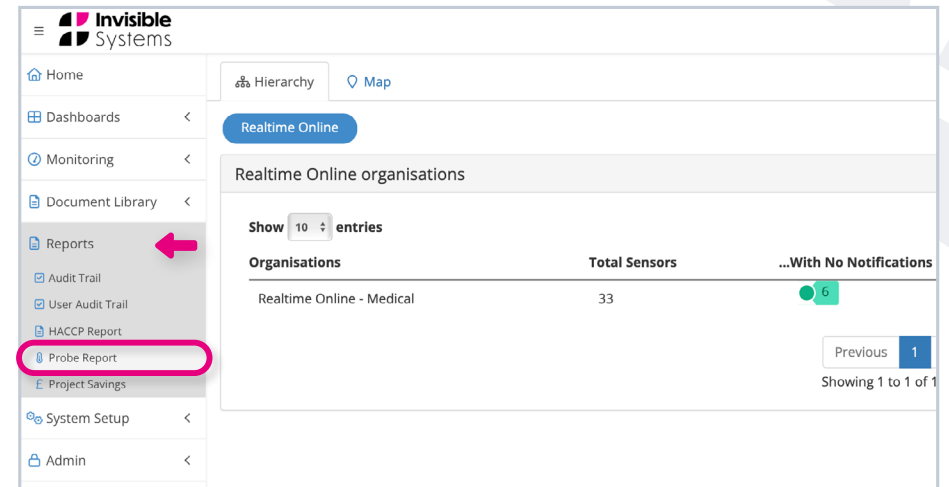
Click 'Report' in the side menu, then select 'Probe Report'.

Step 2

You can tailor your report under the 'Report Options' section:

- Choose a start and end date for your report. This means data will only be pulled from that time window.
- Select the sensor points for which you want to view data. You can select all by clicking 'Select all' at the top of the drop-down menu, search for a sensor point using the search bar, or simply scroll through and select each one.

Click 'Submit'.



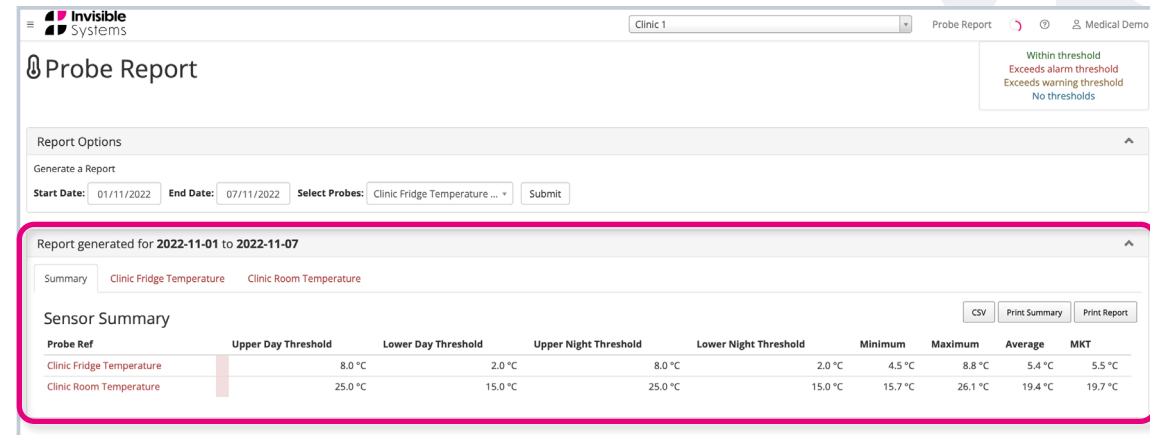
Step 3

A summary table will then be generated.

The table will display: the **minimum and maximum thresholds** for both day and night; the **minimum and maximum reading**; the **average temperature**, and the **Mean Kinetic Temperature (MKT)**.

The **colour next to each sensor indicates its status during the selected time window**. The colour shows whether the sensor stayed within threshold, exceeded its alarm threshold, exceeded its warning threshold, or had no thresholds.

In this example, both sensors have exceeded their thresholds at some point, as shown by the colour red.



Probe Report

Report Options

Generate a Report


Start Date: 01/11/2022 End Date: 07/11/2022 Select Probes: Clinic Fridge Temperature ... Submit

Report generated for 2022-11-01 to 2022-11-07

Summary Clinic Fridge Temperature Clinic Room Temperature

Sensor Summary

| Probe Ref | Upper Day Threshold | Lower Day Threshold | Upper Night Threshold | Lower Night Threshold | Minimum | Maximum | Average | MKT |
|---------------------------|---------------------|---------------------|-----------------------|-----------------------|---------|---------|---------|---------|
| Clinic Fridge Temperature | 8.0 °C | 2.0 °C | 8.0 °C | 2.0 °C | 4.5 °C | 8.8 °C | 5.4 °C | 5.5 °C |
| Clinic Room Temperature | 25.0 °C | 15.0 °C | 25.0 °C | 15.0 °C | 15.7 °C | 26.1 °C | 19.4 °C | 19.7 °C |



| Upper Day Threshold | Lower Day Threshold | Upper Night Threshold | Lower Night Threshold | Minimum | Maximum | Average | MKT |
|---------------------|---------------------|-----------------------|-----------------------|---------|---------|---------|---------|
| 8.0 °C | 2.0 °C | 8.0 °C | 2.0 °C | 4.5 °C | 8.8 °C | 5.4 °C | 5.5 °C |
| 25.0 °C | 15.0 °C | 25.0 °C | 15.0 °C | 15.7 °C | 26.1 °C | 19.4 °C | 19.7 °C |

Within threshold
Exceeds alarm threshold
Exceeds warning threshold
No thresholds

Sensor Summary

Probe Ref

Clinic Fridge Temperature

Clinic Room Temperature

Step 4

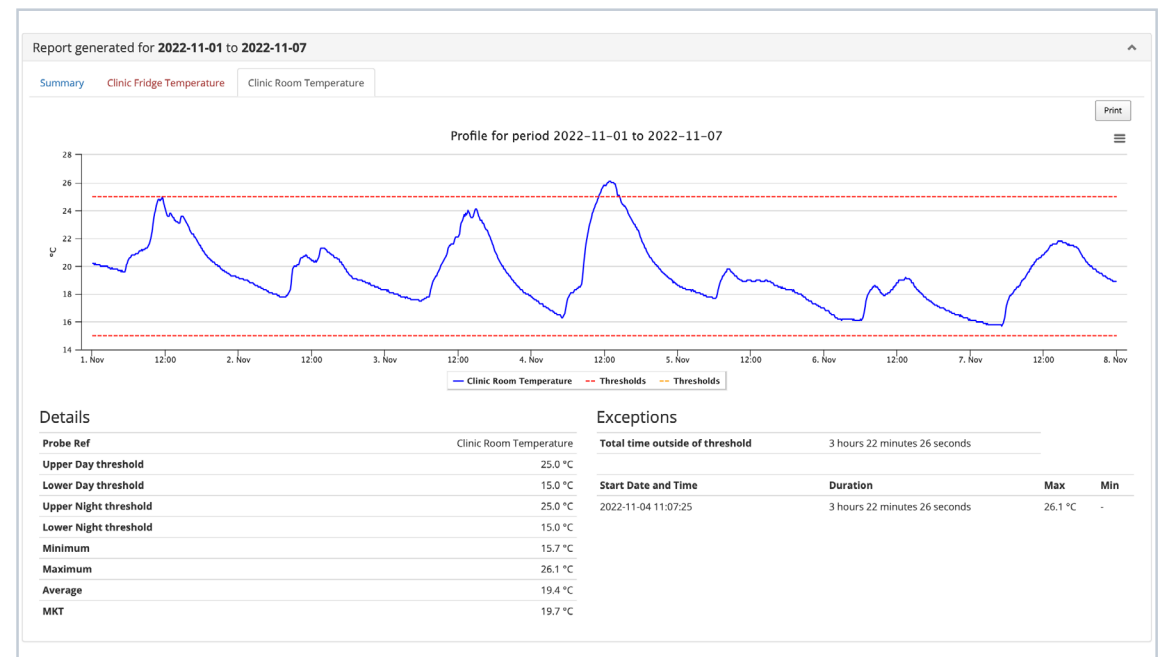
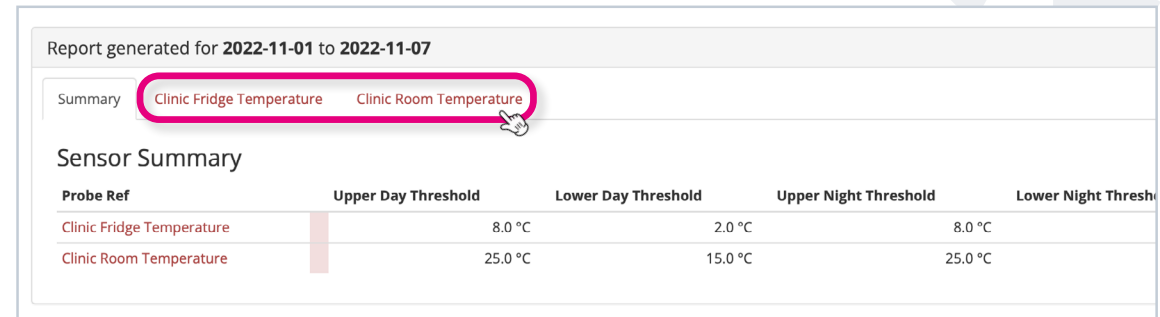
Tabs for each sensor point will be displayed across the top of the summary table.

Click on a tab to view a report for each sensor point.

Step 5

A chart will be displayed for the chosen sensor point.

The blue line represents the sensor's temperature over the time window, while the straight red lines indicate its minimum and maximum thresholds.

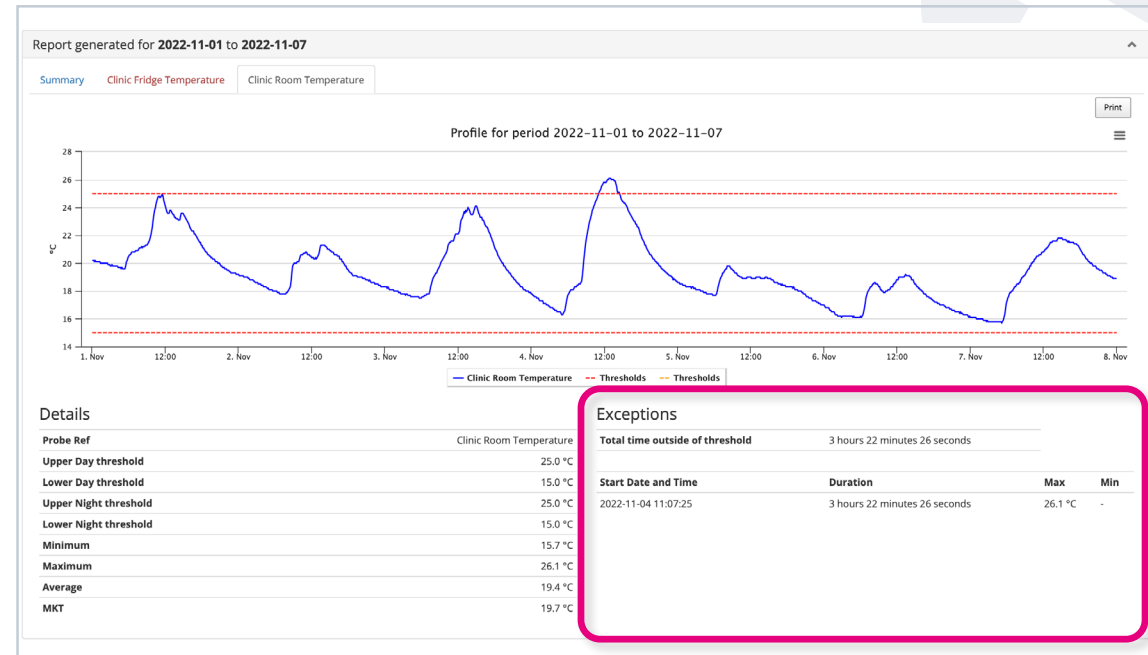


Step 6

Next to the details of the sensor, you'll also see a section containing information about exceptions. **Exceptions are when a sensor slips out of its thresholds.**

The details here tell you **when the instance happened, its duration, and the reading** that caused the sensor to exceed its maximum or minimum threshold.

Please note that **not all exceptions mean an alarm was triggered** - it counts for ANY time a threshold was breached. For example, if you've set up a 30-minute delay time between a threshold being breached and an alarm being triggered, and the sensor returned to safe limits within that 30 minutes, the instance would still be shown here as an exception.



Exceptions

| | | | |
|---------------------------------|--|-------------------------------|-------------------|
| Total time outside of threshold | | 3 hours 22 minutes 26 seconds | |
| Start Date and Time | | Duration | <div>MaxMin</div> |
| 2022-11-04 11:07:25 | | 3 hours 22 minutes 26 seconds | 26.1 °C - |

Step 7

Above the chart on the right-hand side, you'll see a 'Print' button and three horizontal lines.

Click 'Print' to print your report right away.

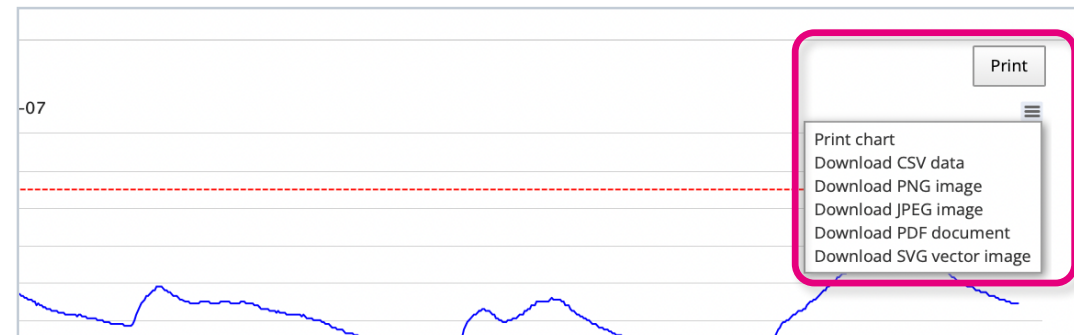
Click the three lines to view options for downloading the report in various formats.

Similarly, you'll find three options on the summary page: 'Print Summary', 'Print Report' and 'CSV'.

'Print Summary' lets you print only the summary table.

'Print Report' will print the summary table and the reports for each sensor.

'CSV' allows you to download the summary as a CSV file.



| Lower Night Threshold | | Minimum | Maximum | Average | MKT |
|-----------------------|---------|---------|---------|---------|---------|
| 8.0 °C | 2.0 °C | 4.5 °C | 8.8 °C | 5.4 °C | 5.5 °C |
| 5.0 °C | 15.0 °C | 15.7 °C | 26.1 °C | 19.4 °C | 19.7 °C |
| | | | | | |

If you require any additional training, please contact
help@invisible-systems.com

