



Conditions Summary

A guide to understanding the Conditions Summary page

The Conditions Summary page displays information for temperature-monitoring sensors, including their current status and any alarms or warnings that have been triggered. This guide will give you a better understanding of the Conditions Summary page in Live by Invisible Systems.

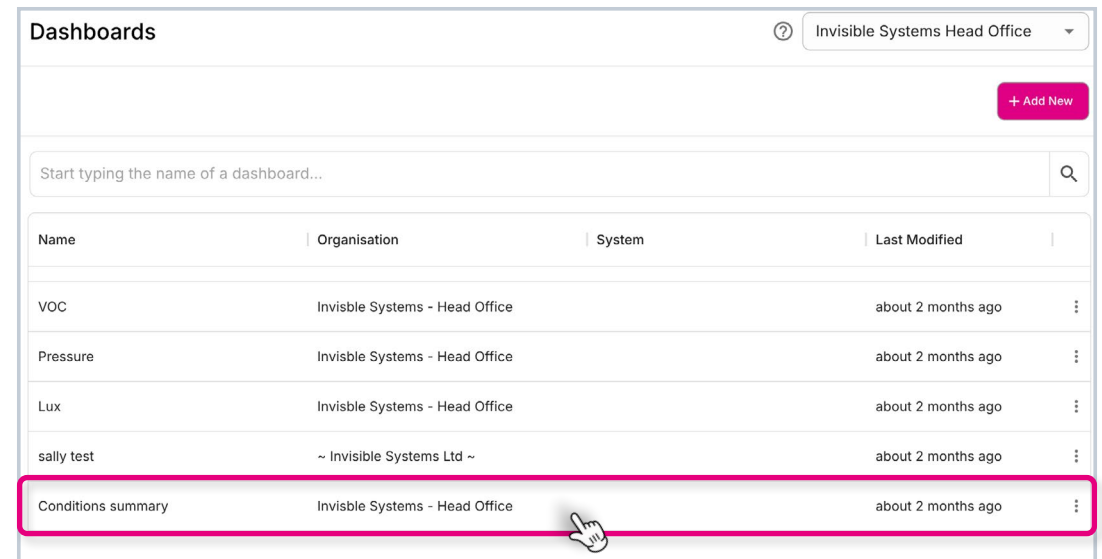
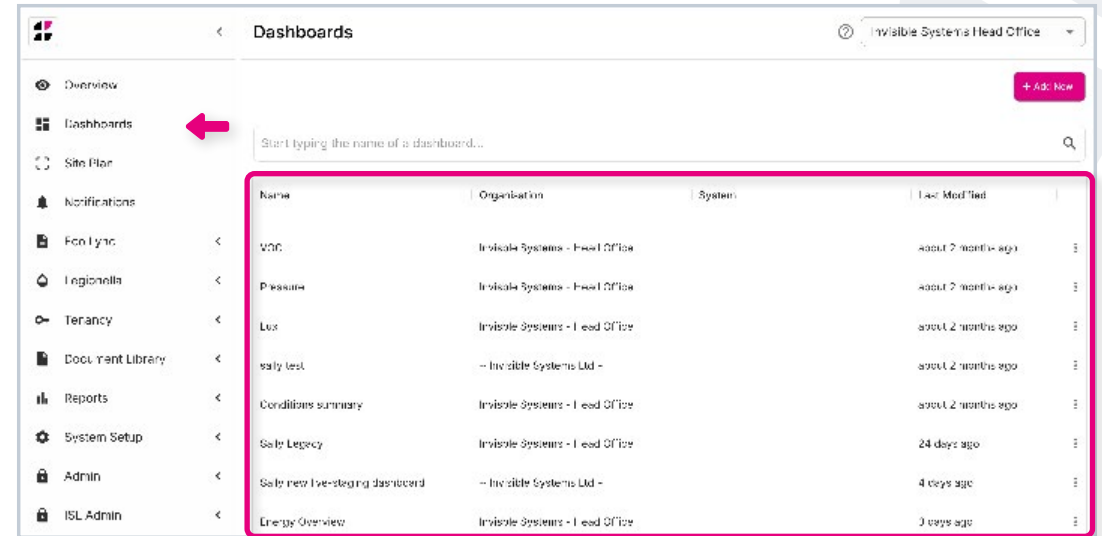
Step 1

Click on 'Dashboards' in the side menu. You will see a list of your current dashboards.

Step 2

Select 'Conditions summary' from the list.

You will be taken to the Conditions Summary page, where you will be given an overview of your sensors, as well as be alerted to any alarms, warnings or offline sensors.

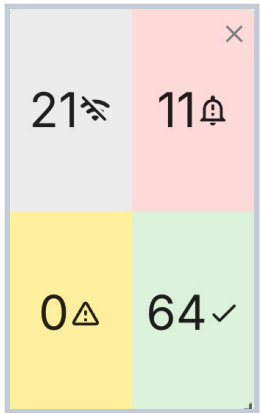
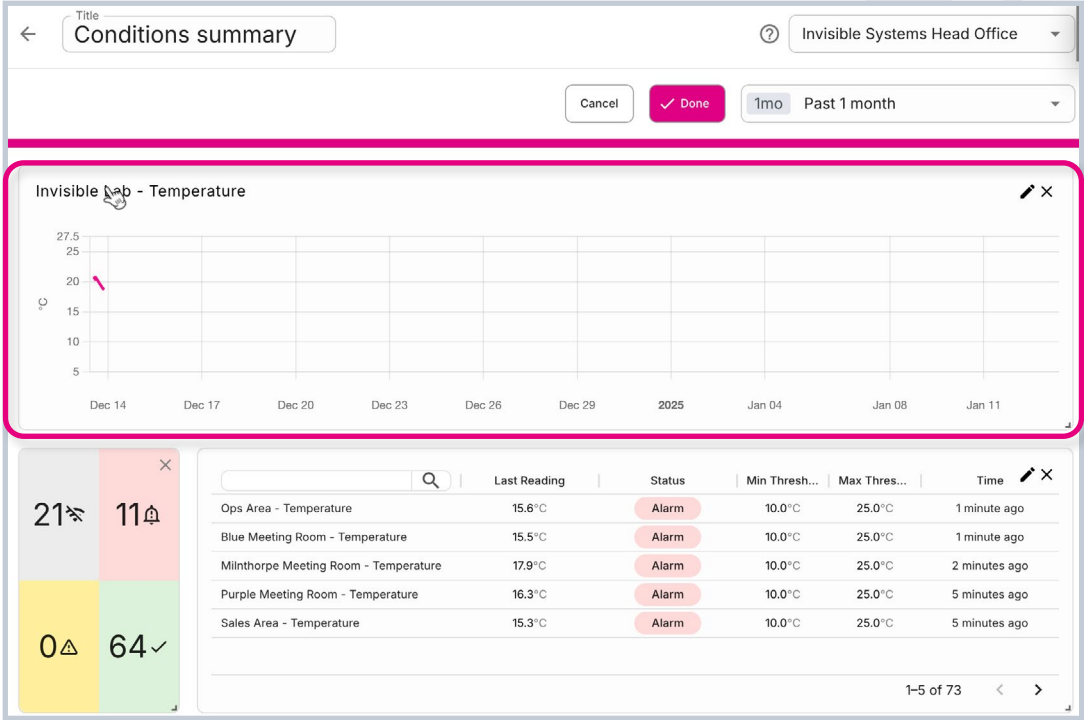


Sensor Overview:

At the top of the page, you'll see a line graph showing trends in your sensors over the past 24 hours. **Hover over a line to see the status of the sensor.**

Below this, you'll see a **summary tile** split into four sections. These will **indicate how many sensors are currently in each of these statuses**, i.e. Offline, Alarm, Warning, Okay.

You'll also see **details for the first five sensors** on your system. If these are all in a healthy state (green), they will be displayed in alphabetical order. However, any sensors that are offline (blue), have an unacknowledged alarm (red) or have triggered a warning (yellow) **will be pushed to the top so you can easily see them.**



	Last Reading	Status	Min Thresh...	Max Thres...	Time
Sales Area - Temperature	15.1°C	Alarm	10.0°C	25.0°C	1 minute ago
Sales Area - Pressure	1,022.7hPa	Alarm	1,000.0hPa	1,020.0hPa	1 minute ago
Ops Area - Temperature	15.6°C	Alarm	10.0°C	25.0°C	2 minutes ago
Blue Meeting Room - Temperature	15.5°C	Alarm	10.0°C	25.0°C	2 minutes ago
Milnthorpe Meeting Room - Temperature	17.9°C	Alarm	10.0°C	25.0°C	3 minutes ago

Sensor Collection Report:

In the bottom left of the page, there is a **Sensor Collection report** displaying a heat map for the first five sensors.

Click on 'Full report' to go to the main **Sensor Collection page** and get a full breakdown for each sensor, as well as change the reading times for the report. (See the 'Sensor Collection Reports' guide for more information.)

Notifications:

In the bottom right of the page, you will see a **Notifications table**. This displays any alarms that need to be acknowledged.

Sensor Collection

	Dec 13, 2024			Dec 14, 2024			
Sensor Name	09:00	12:00	17:00	09:00	12:00	17:00	09
Blue Meeting Room - Temperature	18.7	20.2	20.1	17.7	17.4	17	16.7
Invisible Lab - Temperature	n/a	n/a	n/a	n/a	n/a	n/a	n/a
Kitchen Area Sink Hot (Max + Offset)	28	30	30	27	26.5	26	25.5
Kitchen Break out Area - Temperature	16.4	19.9	18.7	15.7	15.5	15	n/a
Milnthorpe Meeting Room IAQ - Press...	1014.7	1013.3	1011.2	1009	1009.1	1009.7	1010.5

Severity	Raised	
Alarm	09:49 Mon Jan 13	Milnthorpe
Alarm	09:49 Mon Jan 13	Milnthorpe
Alarm	09:49 Mon Jan 13	Milnthorpe
Alarm	09:49 Mon Jan 13	Milnthorpe

Step 3

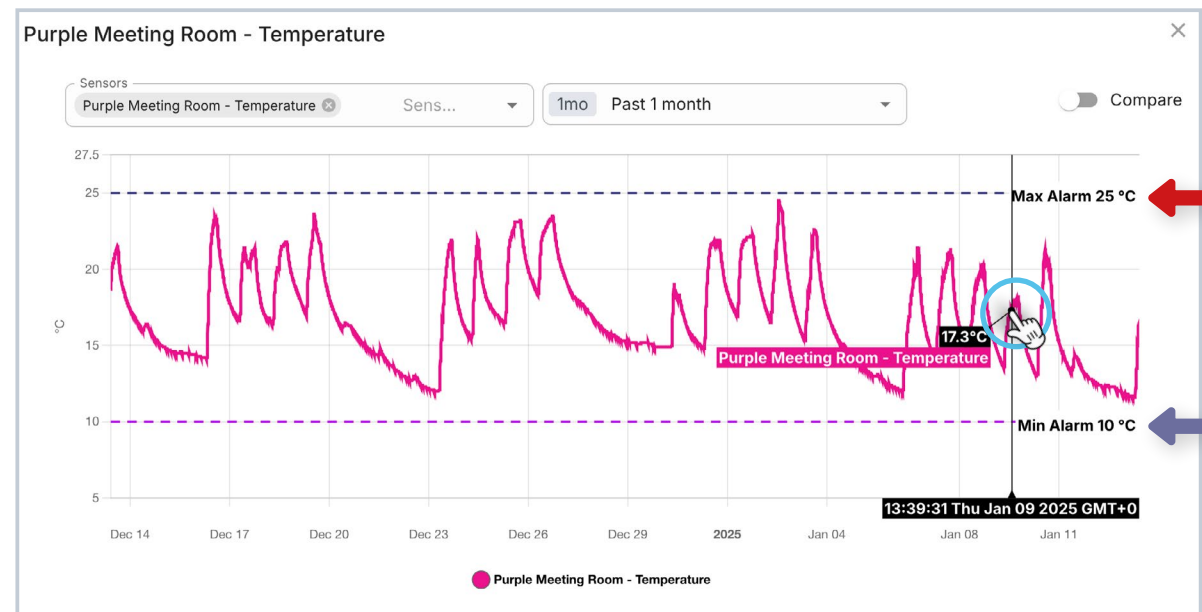
To see detailed information about a specific sensor on this page, simply click on it in the table.

Doing this will take you to a line graph for the sensor, which displays readings from midnight to the current time. **Hover over any part of the line to see its status at that time.**

You will also see two lines - one indicating the sensor's **maximum threshold**, and another indicating its **minimum threshold**.

	Last Reading	Status	Min Thresh...	Max Thres...	Time
Purple Meeting Room - Temperature	16.1°C	Alarm	10.0°C	25.0°C	1 minute ago
Invisible Lab - Temperature	15.1°C	Alarm	10.0°C	25.0°C	2 minutes ago
Sales Area Temperature	14.9°C	Alarm	10.0°C	25.0°C	2 minutes ago
Sales Area - Temperature	15.1°C	Alarm	10.0°C	25.0°C	3 minutes ago
Sales Area - Pressure	1,022.7hPa	Alarm	1,000.0hPa	1,020.0hPa	3 minutes ago

1 row selected 1-5 of 73

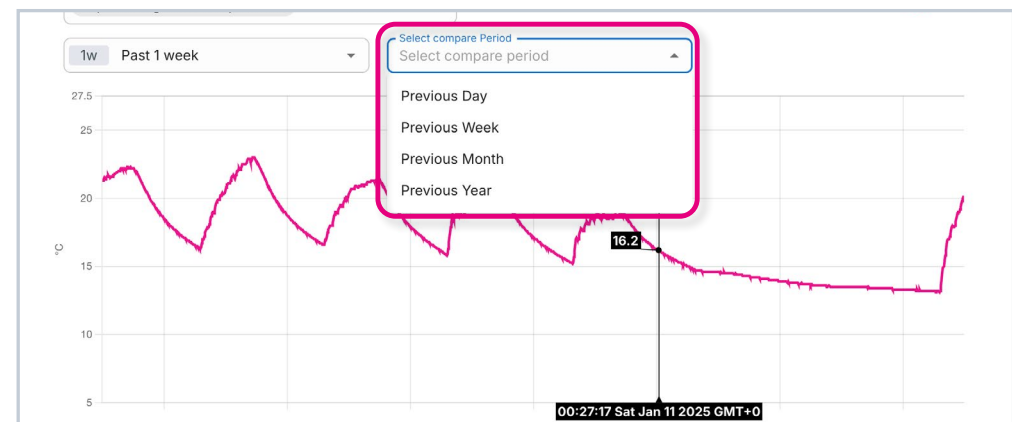
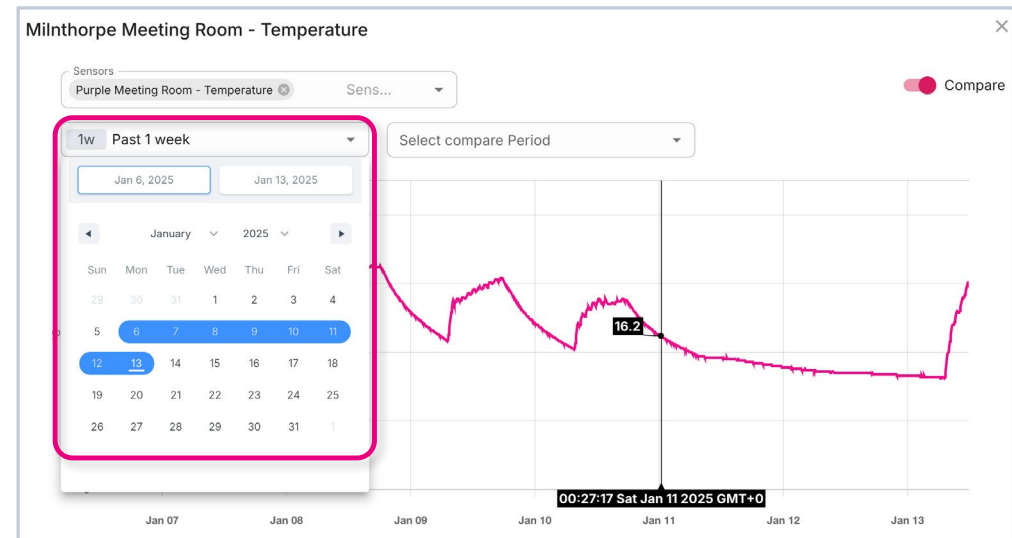
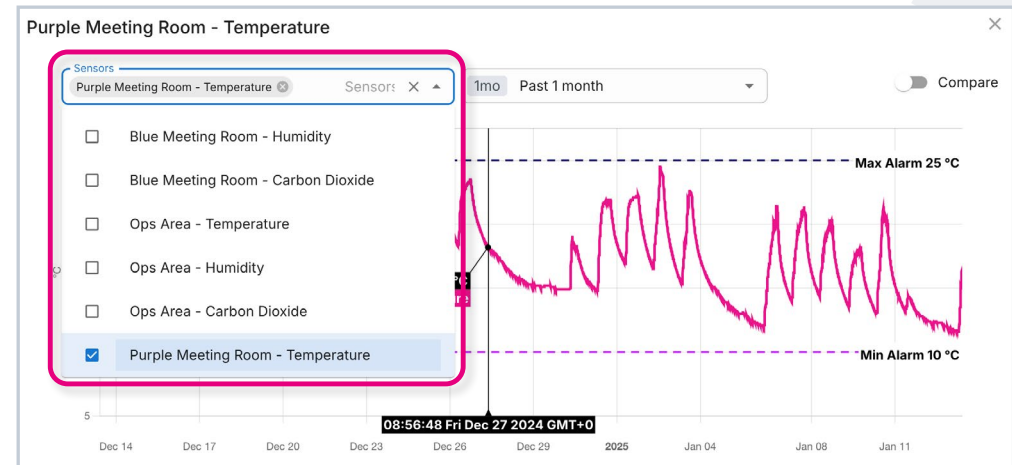


Step 4

You can tailor your graph using the options below it:

- Choose **the sensor/sensors you want to view**. You may want to select a few to compare their data to each other. (Please note that the minimum and maximum threshold lines will disappear when viewing a chart for multiple sensors.)
- Click **'Period'** to select a **time window**. This will let you see a chart for a certain period of time.
- Click **'Compare'** to select another **time window** and compare it to the one you've specified under 'Period'.

Click 'Update graph'.



If you require any additional training, please contact
help@invisible-systems.com

